

# CyberTank

## General informations

Genre		Year	
Language		Publisher	Games Computers Play, Inc.
Controls		Developer	
Players		Country	USA
Programmer(s)		License	On-Line Game
Graphic Artist(s)		Medium	
Musician(s)		Rarity	
Cover Artist(s)		Serial	

# THE CREATION OF A NEW BREED



## The GCP Network: More Communications, More Graphics, LESS Hassle!

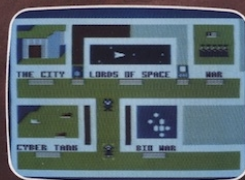
### The GCP City:

The entry to worlds of adventure and challenge.



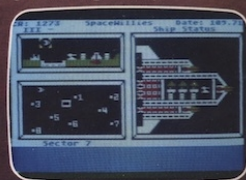
### The Game Floor:

Choose your favorite and match wits with others.



### Lords of Space:

Explore and conquer your way to galactic supremacy.



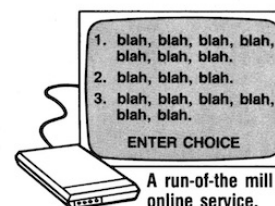
**FEATURES:** Joystick-driven; no commands to learn! Private mail, bulletin boards, program library, file transfers, automatic logons, User Group support, local phone call access from most cities, no network surcharge. **SYSTEM REQUIREMENTS:** 48K Atari, 1 disk drive, modem.

For more information contact:

**GCP** **GAMES  
COMPUTERS  
PLAY, INC.**

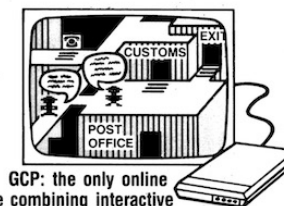
CIRCLE #139 ON READER SERVICE CARD

112 East Market Street, York, PA 17401 / 717-848-2660



A run-of-the mill online service.

## MODEM OWNERS: Tired of Text? Go for Graphics!



GCP: the only online service combining interactive graphics with electronic mail, downloads, AND games!

### What is an online service?

An online service consists of a large, multiuser computer which your computer can access through the telephone lines. Since many people can access it at one time, you can interact and exchange information with other computer owners.

### How is GCP different from other online services?

All other online services are outgrowths of business information services. GCP was designed from the ground up to be a service for home computer owners. This means that GCP is easy to learn and fun to use. You can do everything you want with the joystick and function keys on your computer.

In order to provide all these capabilities, we have implemented the entire system using full color graphics. GCP is set up as a City, with buildings for the Post Office, GCP offices, Games and other services. You, and the other customers, are figures which you move around in the City with your joystick.

### You mean the City is shown on my TV screen?

Yes, indeed. Not only the City, but the inside of the buildings and the games are shown on your screen in full color graphics. Additionally, the other customers are shown on your screen as they move around the City and buildings.

### Isn't it slow downloading the graphics?

No, because we do not download the graphics. All the pictures of the City, buildings and games are supplied on disk. When you go from one building to another, the graphics are accessed at disk drive speeds.

### Do I need special software?

Yes, very special. But don't worry, we provide it with your sign-up.

### Can I download public domain programs?

Yes, GCP has a public domain archive in its Post Office with about a Megabyte of Atari programs you can download.

### What games do you have?

At the moment, we have BioWar, CyberTank and CyberShip. Lords of Space is under development and may be done by the time you read this. All the games are played online against other customers, so you are matching wits with humans from all over the country.

BioWar is a multi-player adaptation of Conway's game of Life. Each player has a cell colony which he tries to expand, often at the expense of the other players, while contending with the problems of under- and over-population.

CyberTank and CyberShip are tactical design and combat games set on the CyberWorld, an artificial battleground for cybernetic machines. You design your own tank or ship and battle it out with up to 15 other players on a scrolling map.

### Do the games use graphics also?

Extensively. For example, in CyberTank, when you design your tank, the hull is shown on the screen, as are all the equipment

choices, in full color graphics. You select and place the items by using your joystick.

In the combat phase, your screen shows the status of your tank, the 1 mile area around your tank (only a part of the larger battlefield), and any enemy tanks inside that area.

### What equipment do I need?

GCP supports any member of the 8 bit Atari line with 48K of memory. You will also need a disk drive and a modem. We support all the available modems for the Atari.

### How much does it cost?

The sign-up kit includes the software and documentation you need, plus 5 free hours at standard rates. This kit costs \$30. After the free hours are used up, the standard rates are \$6 per hour (weekday evenings after 6pm local time and all day Saturday and Sunday) for either 300 or 1200 baud access. Daytime hours during the week are \$15/hour.

### Is it a long distance call?

Not from most U.S. cities. GCP is accessed through Tymnet, a national data service with over 500 locations in the U.S. The Tymnet charges are included in the standard rates, so you don't have to worry about add-on charges.

### How do I sign up?

Just fill out the information requested below and send it to us with your credit card number or check/money order. For faster response, call us at: (717) 848-2660 (VOICE)

and give us your logon name, password and credit card number over the phone.

Logon name (letters/numbers only)  
[hint: keep it short]

Choices:

1st \_\_\_\_\_

2nd \_\_\_\_\_

3rd \_\_\_\_\_

Password (must be 6-10 chars):

\_\_\_\_\_

**GCP** **GAMES  
COMPUTERS  
PLAY, INC.**

112 East Market Street, York, PA 17401  
717-848-2660 (VOICE)